

## Human Machine Interface Software, with Data-Logging for Older Watlow Controllers

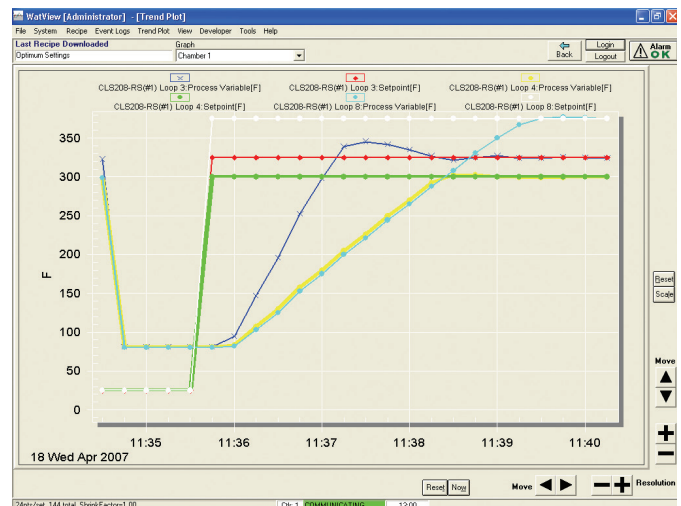
**Note:** WATVIEW™ is not compatible with Windows® Vista or Windows® 7 and does not support Watlow EZ-ZONE® controllers. Please consider SpecView for your HMI software needs.

WATVIEW is Watlow's Human/Machine Interface (HMI) software for older Watlow® controllers. WATVIEW features easy controller setup, recipe and alarm managers, data-logging and trend plot graphing

WATVIEW is available in three editions:

- **Run-Time Edition**—for operating controllers
- **Developer Edition**—creates custom screens
- **Configurator Edition**—available free of charge for setting up controllers at [www.watlow.com](http://www.watlow.com)

**Note:** See the Edition Comparison Table on the next page for details about which features are in each edition.



### Features and Benefits

#### Easy program setup

- Scans all available communications ports and baud rates for supported controllers
- Detects which controllers are connected to the computer
- Automatically configures with appropriate setup screens and help files for detected controllers

#### Controller specific setup and spreadsheet overview screens

- Simplify monitoring and adjusting controller parameters
- Display settings for multiple channels and controllers
- Present parameters according to controller's menus

#### Recipe manager

- Stores commonly used controller settings
- Speeds up repetitive controller setups
- Backs up "snapshot" of your settings against data loss

#### Calendar-start function

- Automates processes by downloading recipes automatically in a one-time or repeating schedule

#### Alarm manager

- Makes alarms easier to understand with customizable, plain text messages
- Aids in troubleshooting by time stamping and logging alarms
- Streamlines alarm management by allowing monitoring, acknowledging and clearing alarms for multiple controllers

#### Data-logging and trend plot graphs

- Reduce labor and increase accuracy by automating data collection for the parameters you choose
- Save time by exporting data to Excel®-compatible spreadsheet files
- Simplify process adjustments and troubleshooting by graphing up to 20 data items together on a graph
- Provide flexibility by allowing users to name, save and choose for display from any number of graphs

## Specifications

### Windows® XP System Requirements:

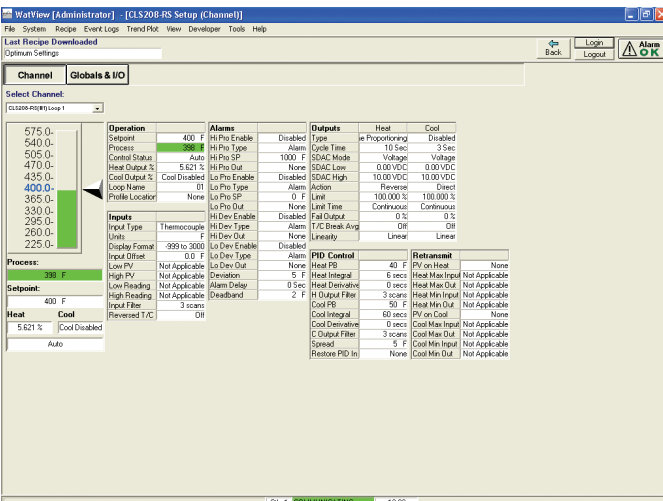
- RAM: 128 MB
- 800 x 600 screen resolution
- 16-bit or higher color palette ("High Color")
- Serial communications (COM) or ethernet port
- Microsoft® compatible pointing device (mouse or trackball)
- Parallel or USB port
- 200 MB hard drive space
- CD-ROM drive or Internet connection (for installation only)

### Controllers Supported:

WATVIEW supports the following controllers when equipped with the listed firmware revision or later:

- CAS200 (Rev. 2.0)
- CLS200 SERIES standard, enhanced, and extruder (Rev. 3.31), ramp and soak (Rev. 3.40)
- CPC400 SERIES (Rev. 1.00)
- F4S/F4D (Rev. 2.06), F4P (3.00)
- MICRODIN™ (Rev. 1.01)
- MLS300 SERIES standard, enhanced, and extruder (Rev. 3.31), ramp and soak (Rev. 3.40)
- POWER SERIES (Rev. 1.00)
- SERIES 96 (Rev. 1.20)
- SERIES 96 with ramping (Rev. 1.05)
- SERIES 97 (Rev. 1.10)
- SERIES SD controller (Rev. 4.00), profiling (Rev. 1.00), single-display controller (Rev. 2.00), limit (Rev. 2.00)

**Note:** See [www.watlow.com/products/software/watview.cfm](http://www.watlow.com/products/software/watview.cfm) to download the latest version or get a free copy of the WATVIEW Configurator edition.



Setup screens make it easy to configure controllers.

## Edition Comparison Table

	Developer	Runtime	Configurator
<b>Process Monitoring Features</b>			
Spreadsheet overview	Yes	Yes	Yes
Controller setup screens	Yes	Yes	Yes
Viewing custom screens	Yes	Yes	Yes
Alarm management	Yes	Yes	
Creating and editing custom screens	Yes		
Editing user variables	Yes		
<b>Process Management and Documenting Features</b>			
Editing and downloading recipes	Yes	Yes	Yes
Calendar-based, automatic recipe start	Yes	Yes	
Event logging	Yes	Yes	
Data logging	Yes	Yes	
Trend plot graphing	Yes	Yes	
<b>Utility Features</b>			
Multiple-controller support	Yes	Yes	Yes
Communications diagnostics	Yes	Yes	Yes
Password security	Yes	Yes	Yes
Customizable parameter names	Yes	Yes	Yes
Online help	Yes	Yes	Yes
Active X (OLE 2.0) support	Yes	Yes	Yes
Personal webserver compatibility	Yes	Yes	Yes

## Ordering Information

### Part Number

1	2	3	4	5	6	7	8	9	10	11	12
WV00				-	0	-	0	-	0000		
<b>5</b> Edition											
D =		Developer									
R =		Runtime									
<b>7</b> Key Type											
P =		Parallel Port (LPT)									
U =		USB									

Watlow® is a registered trademark of Watlow Electric Manufacturing Company.

Windows®, Excel® and Microsoft® are registered trademarks of Microsoft Corporation.

To be automatically connected to the nearest North American Technical Sales Office:

**1-800-WATLOW2 • [www.watlow.com](http://www.watlow.com) • [inquiry@watlow.com](mailto:inquiry@watlow.com)**

**International Technical Sales Offices:** Australia, +61 3 9335 6449 • China, +86 21 3532 8532 • France, +33 1 41 32 79 70  
 Germany, +49 (0) 72 53 / 94 00-0 • Italy, +39 024588841 • Japan, +81 3 3518 6630 • Korea, +82 2 2628 5770  
 Malaysia, +60 3 8076 8745 • Mexico, +52 442 217 6235 • Singapore, +65 6773 9488 • Spain, +34 91 675 12 92  
 Taiwan, +886 7 288 5168 • United Kingdom, +44 (0) 115 964 0777